



PRESS RELEASE

**WESDOME CUTS 26.1 gAu/tonne OVER 10.3 METRES
AND 16.5 gAu/tonne OVER 12.3 METRES IN DUBUISSON DRILLING**

Val d'Or, Quebec – September 8, 2009 – Wesdome is pleased to announce that ongoing drilling is revealing high grades over substantial widths. Recent results serve to confirm the potential significance of this exciting new find. The purpose of the drilling is to define the dimensions, internal continuity and geometry of widespread gold mineralization initially discovered last fall.

Initial results are very encouraging. Table 2 summarizes the results of drilling on three sections at 50 metre centres. Figure 1 is a crosssection demonstrating continuity determined to date. Table 1 provides a breakdown of individual assays comprising the high grade intersection in Hole S552. These assays demonstrate high grades and favourable grade distribution.

Drilling continues with two machines.

Table 1: Hole S552 Assay Distribution

	From (m)	To (m)	Corelength (m)	Assay (gAu/tonne)
	200.9	201.9	1.0	4.55
	201.9	202.9	1.0	114.99
	202.9	203.9	1.0	4.00
	203.9	204.9	1.0	13.15
	204.9	205.9	1.0	48.34
	205.9	207.0	1.1	31.11
	207.0	208.0	1.0	29.25
	208.0	209.0	1.0	7.62
	209.0	209.9	0.9	10.26
	209.9	211.2	1.3	2.69
Average	200.9	211.2	10.3	26.10

Table 2: Significant Intersections

Hole No.	From (m)	To (m)	Core Length (m)	True Width* (m)	Assay (gAu/tonne)	Cut Assay (34.28 gAu/tonne)	
S540	250.6	254.6	4.0	2.6	2.33	2.33	
	279.4	295.0	15.6	10.1	3.52	3.52	
inc. and	279.4	282.5	3.1	2.0	7.59	7.59	
	288.5	295.0	6.5	4.2	4.75	4.75	
S541	152.6	154.3	1.7	1.2	1.53	1.53	
	189.7	196.0	6.3	4.5	1.19	1.19	
	219.8	227.2	7.4	5.3	5.04	5.04	
	255.2	261.0	5.8	4.1	1.09	1.09	
	345.6	351.5	5.9	4.1	13.52	13.52	
	inc.	345.6	347.0	1.4	1.0	56.03	34.28
		432.0	437.5	5.5	3.9	1.63	1.63
S542						no significant assays	
S543						no significant assays	
S544	209.4	211.5	2.1	1.5	1.65	1.65	
	261.2	265.7	4.5	3.2	3.02	3.02	
	inc.	262.2	264.2	2.0	1.4	6.32	6.32
S545	57.3	73.5	16.2	12.5	1.20	1.20	
S546						no significant assays	
S547	159.0	162.0	3.0	2.2	0.95	0.95	
	180.6	182.2	1.6	1.2	3.86	3.86	
S548	135.1	138.0	2.9	2.1	5.92	5.92	
S549	393.9	404.1	10.2	7.2	2.32	2.32	
	inc.	393.9	397.6	3.7	2.6	3.82	3.82
S550	360.8	372.3	11.5	7.3	4.63	4.63	
	443.0	445.0	2.0	1.3	5.16	5.16	
	535.5	545.0	9.5	6.1	3.36	3.36	
	548.5	561.0	12.5	8.0	1.90	1.90	
S551	18.6	40.6	22.0	16.6	3.51	3.51	
	inc.	30.6	40.6	10.0	7.6	5.79	5.79
	66.7	68.9	2.2	1.7	2.28	2.28	
	161.2	173.5	12.3	9.3	16.47	9.40	
	194.5	200.0	5.5	4.1	6.11	6.11	
S552	22.9	30.2	7.3	4.7	20.80	13.12	
	37.5	43.0	5.5	3.5	7.59	7.19	
	73.0	79.5	6.5	4.2	20.84	9.20	
	200.9	211.2	10.3	6.7	26.10	16.90	

* True widths are estimated employing an 80 degree north dip (see Figure 1)

Table 3: Drill Hole Locations

Hole No.	Easting (UTM)	Northing (UTM)	Azimuth (degrees)	Dip (degrees)	Length (metres)
S540	286352	5333488	215	-57	528
S541	286352	5333488	216	-53	465
S542	286411	5333587	204	-59	667
S543	286411	5333587	203	-57	778
S544	286258	5333527	206	-54	454
S545	286182	5333412	210	-50	300
S546	286182	5333412	211	-58	369
S547	286335	5333652	214	-54	655
S548	286336	5333652	214	-52	601
S549	286327	5333542	215	-56	480
S550	286327	5333542	215	-60	723
S551	286272	5333457	207	-52	444
S552	286272	5333457	205	-60	543

The Dubuisson discovery is 100% owned by Wesdome Gold Mines Ltd. It is located in Val d'Or, Quebec, three kilometres east of the Company's Kiena mine and three kilometres north of Agnico Eagle's Goldex Mine.

It is situated at the intersection of ESE trending strata of the Jacola Formation and a prominent regional EW lineament which encompasses the Kiena mine, the past producing Malartic Goldfields Mine and the Canadian Malartic Project of Osisko Mining on the neighbouring properties.

To date, multiple zones of gold mineralization have been identified with widespread drilling along a strikelength of at least 500 metres. Gold is hosted by brittle fractured, albited diorite and/or feldspar porphyry bodies within a broad, deformed ultramafic (komatiite) sequence. Mineralization consists of quartz-albite-tourmaline-pyrite veinlet stockworks commonly carrying free gold (Figure 2). The host rock displays strong Sigma-style alteration containing disseminated pyrite.

Technical information in this press release was compiled and verified by Paul Arscott, PGeo and Chief Geologist, Kiena mine and Marc Ducharme, PGeo and Exploration Geologist, Kiena mine in their capacity as "Qualified Persons" as per National Instrument 43-101. Assaying employed fire assay methods at the Kiena mine assay office. In addition to internal duplicates, standards and blanks, the geology department inserts blind standards and blanks into the sample stream at a frequency of one in twenty to monitor quality control.

Wesdome is an established Canadian gold producer with wholly-owned mining and milling complexes located in Wawa, Ontario and Val d'Or, Québec. Wesdome has been producing gold continually for 20 years on an unhedged basis and to date has produced in excess of 1.0 million ounces. The Company has 99.9 million shares issued and outstanding and trades on the Toronto Stock Exchange under the symbol "WDO".

For further information, please contact:

Rowland Uloth
President

or

Donovan Pollitt, P.Eng.
VP Corporate Development

8 King St. East, Suite 1305

Toronto, ON, M5C 1B5

Toll Free: 1-866-4-WDO-TSX

Phone: 416-360-3743, Fax: 416-360-7620

Email: invest@wesdome.com, Website: www.wesdome.com

This news release contains "forward-looking information" which may include, but is not limited to, statements with respect to the future financial or operating performance of the Company and its projects. Often, but not always, forward-looking statements can be identified by the use of words such as "plans", "expects", "is expected", "budget", "scheduled", "estimates", "forecasts", "intends", "anticipates", or "believes" or variations (including negative variations) of such words and phrases, or state that certain actions, events or results "may", "could", "would", "might" or "will" be taken, occur or be achieved. Forward-looking statements involve known and unknown risks, uncertainties and other factors which may cause the actual results, performance or achievements of the Company to be materially different from any future results, performance or achievements expressed or implied by the forward-looking statements. Forward-looking statements contained herein are made as of the date of this press release and the Company disclaims any obligation to update any forward-looking statements, whether as a result of new information, future events or results or otherwise. There can be no assurance that forward-looking statements will prove to be accurate, as actual results and future events could differ materially from those anticipated in such statements. The Company undertakes no obligation to update forward-looking statements if circumstances, management's estimates or opinions should change, except as required by securities legislation. Accordingly, the reader is cautioned not to place undue reliance on forward-looking statements.

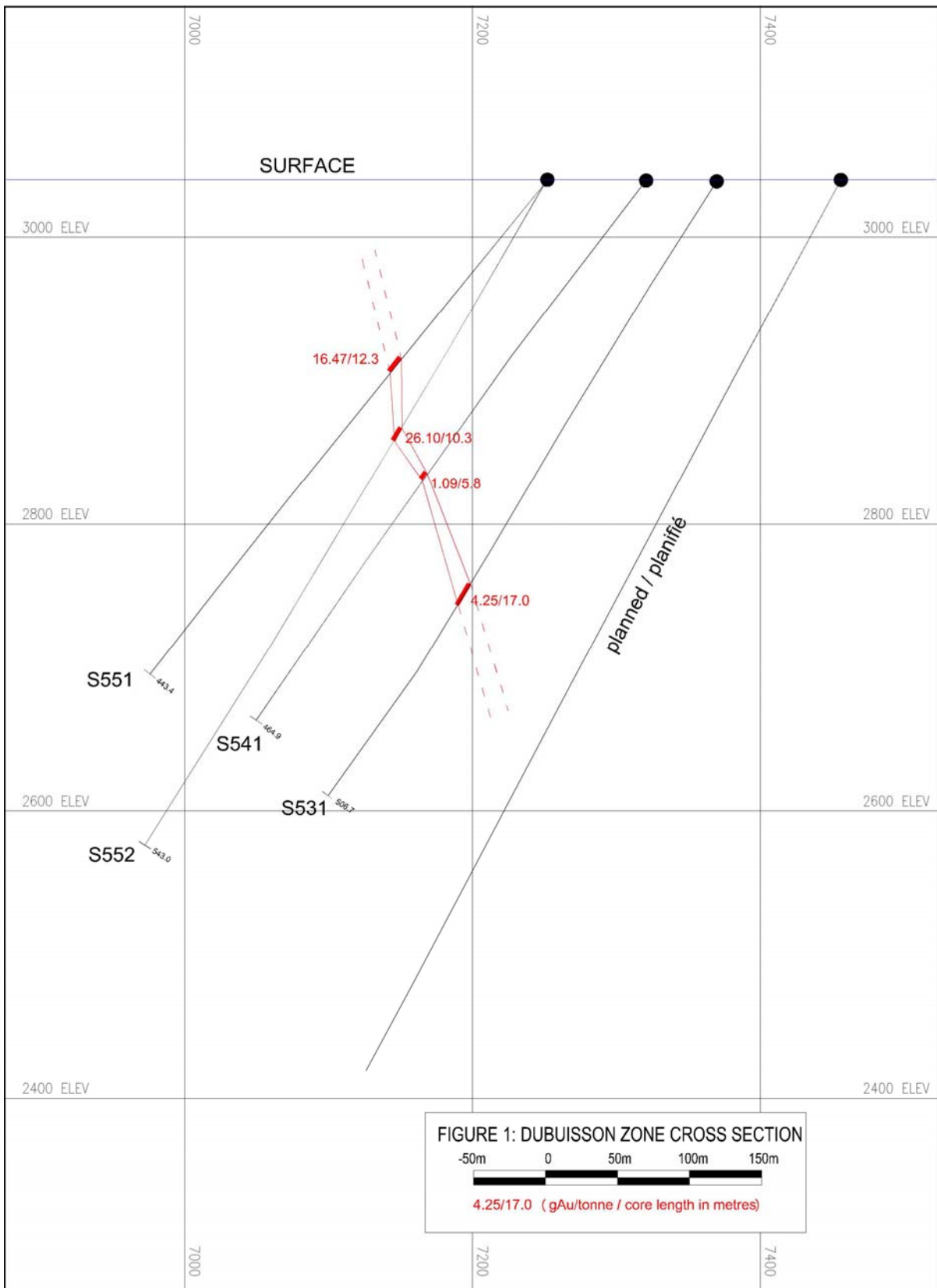


Figure 1 – Dubuisson Zone Cross Section

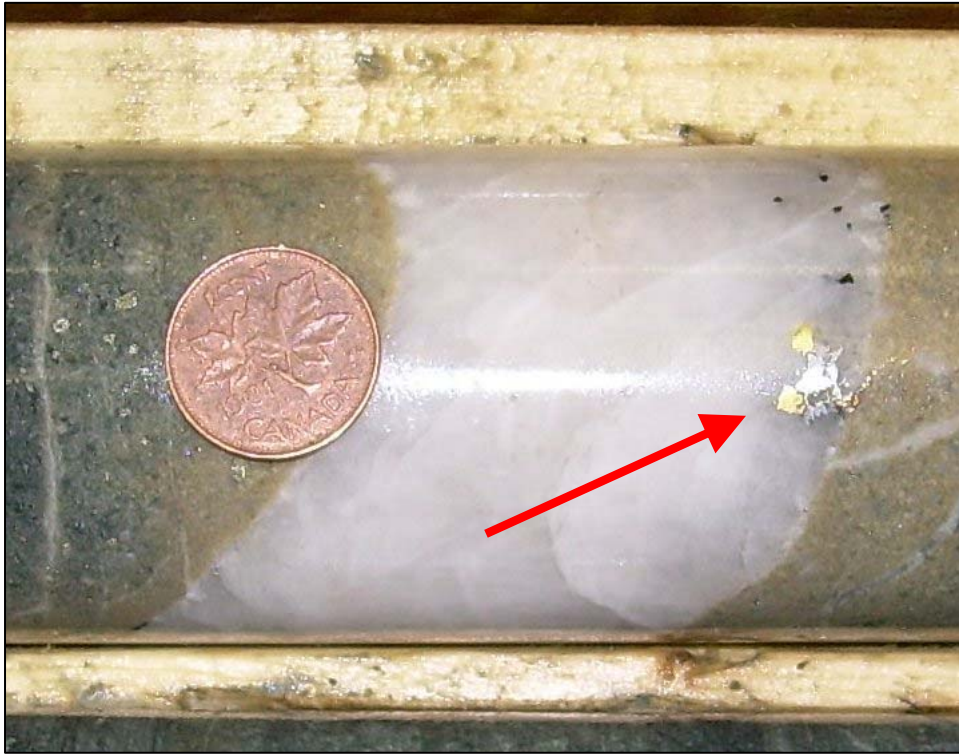


Figure 2 – Visible Gold in hole S-552