



PRESS RELEASE

KIENA CRANKS UP EXPLORATION EFFORT – NEW STRUCTURE RETURNS 4.21 g/tAu OVER 14.95 METRES

Val d'Or, Quebec – October 15, 2007 – Wesdome Gold Mines Ltd. is accelerating its exploration program at the Kiena Mine Complex, Val d'Or, Quebec. Detailed compilation work has identified several promising targets along a structural corridor which rests north of the Cadillac Break and hosts the Goldex, Kiena and Marban-Norlartic deposits. An aggressive surface and underground drilling campaign is planned for 2008.

Work is currently underway on five targets located in close proximity to existing infrastructure at the Kiena mine.

S-50 Depth Extension

On September 12, 2007, drilling began in order to test the S-50 Zone at depth. A cross-cut with a drill bay was excavated at the 910 metre depth at the Kiena mine. Three 600 metre long holes are being drilled in order to test the S-50 Zone to a depth of approximately 1.3 kilometres, 200 metres below any previous drill intercepts. A fourth hole will test the stratigraphy to the southwest of the zone for parallel structures. The S-50 Zone provided approximately 98% of the 1.56 million ounces of gold produced at the Kiena mine until 2002 (Figure 1).

VC and North Zones – Open at Depth

A drill drift is being excavated at the 520 metre level, 700 metres north of the Kiena shaft. This bay will be used to explore the VC Zone and the North Zone at depth. Drilling is scheduled to begin by mid-November, 2007. The VC Zone is presently being mined to a depth of 540 metres, and the North Zone is in pre-production development at a depth of 430 metres. Both zones remain open at depth (Figure 2).

Martin Zone Structure – Open to Southeast

An air-powered drill is scheduled to explore the Martin Zone between the Martin Mine, which produced 139,000 tonnes of ore at 6.2gAu/tonne in the 1930's (NI 43-101 Technical Report of the Shawkey Property, 2004) and the more recently discovered Martin Zone, located one kilometre to the northwest (see press releases from October 19, 2006 and May 25, 2007). Three flat holes, spaced about 70 metres apart are planned to test the structure at the 330 metre level from drill bays in the exploration drift. The target runs parallel to this drift, approximately 50 metres to the southwest.

New Structure Shows Promise

While driving the 33-14 drift east, toward the 22 Zone, a unit of feldspar porphyry with quartz-tourmaline veins was unexpectedly encountered. Although the sample results were only anomalous (up to 0.84gAu/tonne) the unit looked very interesting. A geotechnical drill hole, being planned to check the ground conditions ahead of the drift, was backed up in order to test the porphyry unit ten metres beside the drift. Core samples from this hole returned 4.21gAu/tonne (cut to

34.28gAu/tonne) over a 14.95 metre core length, including intervals of 8.45gAu/tonne (cut) over 4.6 metres in an altered basalt with quartz-carbonate and quartz-tourmaline veins, and 4.52gAu/tonne over a 4.95 metre core length in the feldspar porphyry. Wesdome hopes that by drilling this target and the Martin Zone target a resource can be outlined within easy reach of existing underground workings.

Drifting Nears 22 Zone – Drilling Commences

A surface drill is available to begin a 3000 metre drill program in early to mid-October, 2007, as soon as permitting is complete. Six steeply inclined holes are planned in order to test the Shawkey 22 Zone at a vertical depth of 330 metres. The Company interprets this zone to be an array of flat ladder veins hosted by a vertically dipping feldspar porphyry sill and its immediate country rocks. Previous drilling has traced the structure at shallow depth over a strike length of 700 metres. This information will assist the planning of a bulk sampling program to test the continuity and grade of the 22 Zone. The 330 level access drift is currently 200 metres from the 22 Zone and is expected to arrive near year end.

Having spent the year to date on rigorous compilation work and production oriented definition work, we are excited about accelerating the multifaceted exploration program.

This release was prepared by Paul Arscott, P.Geo and Chief Geologist, Kiena mine and George Mannard, P.Geo. and Vice President Exploration, in their capacity as Qualified Persons within the meaning of National Instrument 43-101. Assay work is performed by fire assay methods at the Kiena mine assay laboratory. In addition to internal duplicates, standards and blanks the geology department inserts blind standards and blanks at a frequency of one in twenty samples to monitor quality control.

Wesdome Gold Mines Ltd. is an established Canadian gold producer with mining operations and development projects in Wawa, Ontario and Val d'Or, Quebec. The Company has 97 million shares issued and trades on the TSX Exchange under the symbol "WDO".

For further information, please contact:

Rowland Uloth
President

Donovan Pollitt
VP Corporate Development

8 King St. East, Suite 1305
Toronto, ON, M5C-1B5
Toll Free: 1-866-4-WDO-TSX
Phone: 416-360-3743, Fax: 416-360-7620
Email: invest@wesdome.com, Website: www.wesdome.com

This news release contains "forward-looking information" which may include, but is not limited to, statements with respect to the future financial or operating performance of the Company and its projects. Often, but not always, forward-looking statements can be identified by the use of words such as "plans", "expects", "is expected", "budget", "scheduled", "estimates", "forecasts", "intends", "anticipates", or "believes" or variations (including negative variations) of such words and phrases, or state that certain actions, events or results "may", "could", "would", "might" or "will" be taken, occur or be achieved. Forward-looking statements involve known and unknown risks, uncertainties and other factors which may cause the actual results, performance or achievements of the Company to be materially different from any future results, performance or achievements expressed or implied by the forward-looking statements. Forward-looking statements contained herein are made as of the date of this press release and the Company disclaims any obligation to update any forward-looking statements, whether as a result of new information, future events or results or otherwise. There can be no assurance that forward-looking statements will prove to be accurate, as actual results and future events could differ materially from those anticipated in such statements. The Company undertakes no obligation to update forward-looking statements if circumstances, management's estimates or opinions should change, except as required by securities legislation. Accordingly, the reader is cautioned not to place undue reliance on forward-looking statements.

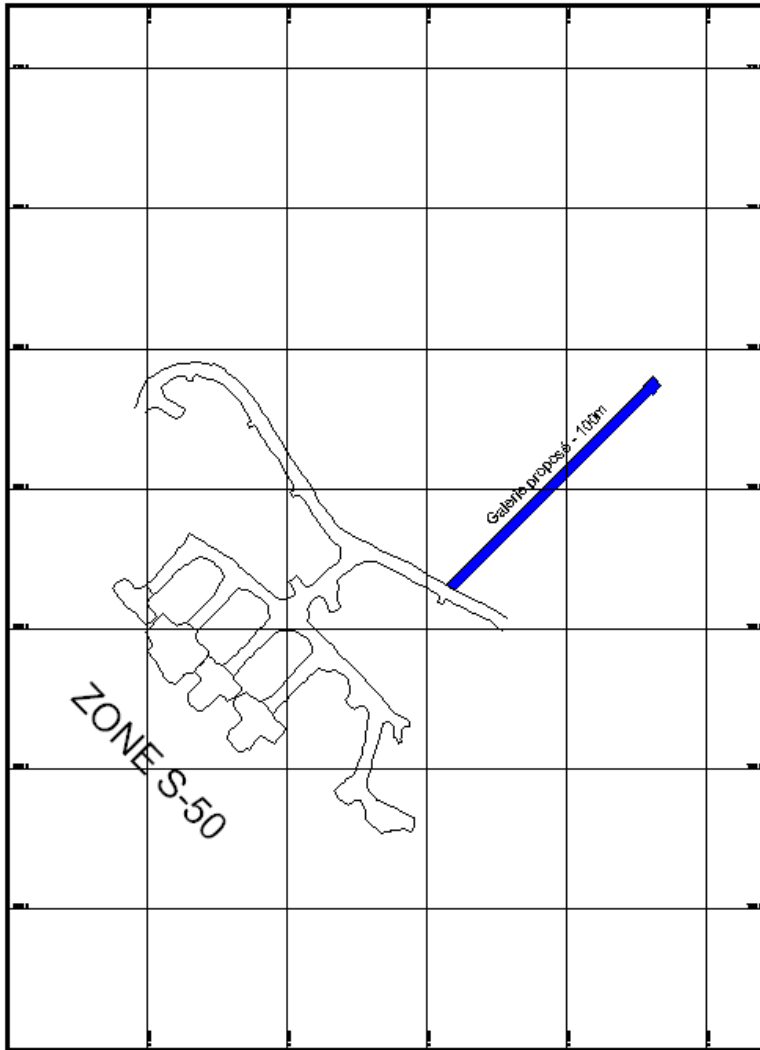


Figure 1a – Plan View of S50 Zone Drilling at Depth

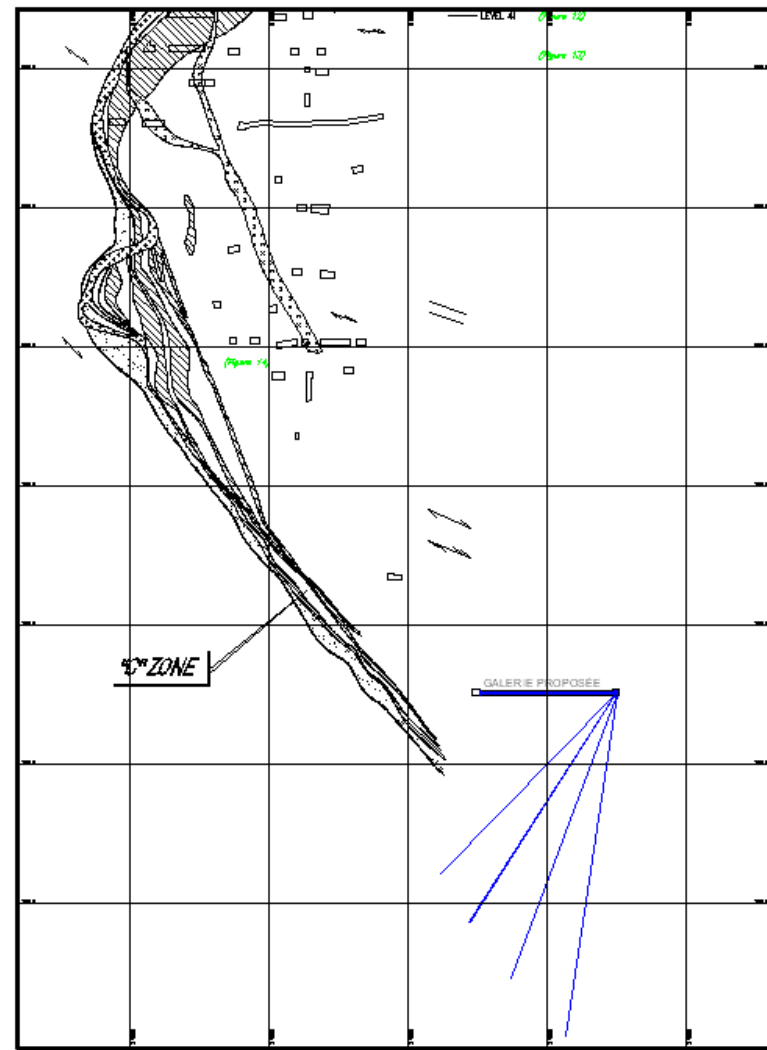


Figure 1b – Section View of S50 Zone Drilling at Depth

